

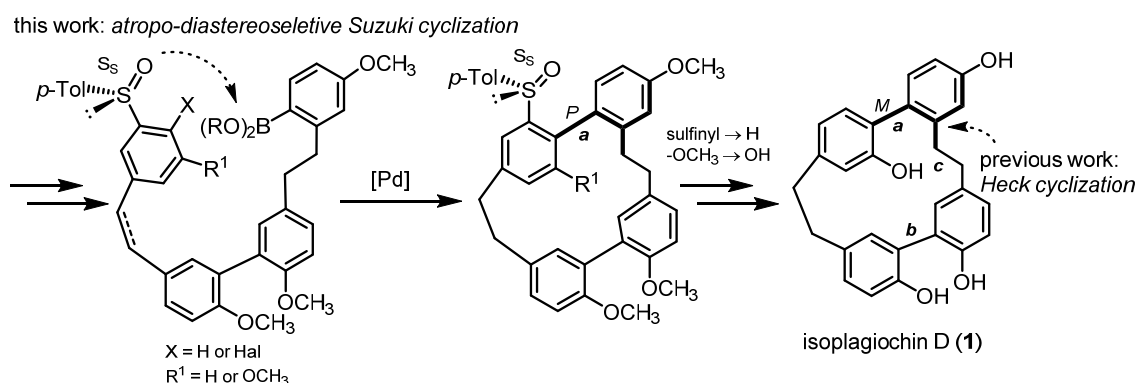
SULFOXIDE CONTROLLED SUZUKI C–C COUPLING FOR THE SYNTHESIS OF CYCLOPHANE TYPE AXIALLY CHIRAL BIARYLS

Sarah Bauspieß^a, Sabine Choppin^b, and Andreas Speicher^a

^aInstitute of Organic Chemistry, Saarland University, Saarbrücken, Germany

^bUMR CNRS 7042, Université de Strasbourg, ECPM, Strasbourg, France

Isoplagiochins D (**1**) as a representative of so called cyclic bis(bibenzyls) – originally isolated from liverworts and exhibiting interesting pharmacological properties [1] – is challenging from a structural as well as from a synthetic point of view [2]. Namely, important with respect to especially enantioselective synthesis is the fact that the biaryl axis **a** is configurationally stable only in case of the entire cyclic framework whereas **b** is more flexible [3]. Our first attempts on atroposelective syntheses of **1** focused on Heck type cyclization forming the ethylene bridge **c** [4]. Regarding our introductory results on sulfoxide-controlled diastereoselective Suzuki coupling en route to this type of compounds [5], we now report on atroposelective syntheses through sulfinyl-controlled diastereoselective intramolecular Suzuki reaction as the ring closing step.



Different approaches – with or without *o*-methoxy group, C–H-activation – can overcome steric hindrance and can give rise to both enantiomers of **1** through complementary exchange procedures for the sulfinyl auxiliary.

[1] Asakawa, Y.; Ludwiczuk, A.; Nagashima, F.; Toyota, M.; Hashimoto, T.; Tori, M.; Fukuyama, Y.; Harinantenaina, L. *Heterocycles* **2009**, *77*, 99.

[2] Harrowven, D. C.; Kostiuk, S. L. *Nat. Prod. Rep.* **2012**, *29*, 223.

[3] Bringmann, G.; Mühlbacher, J.; Reichert, M.; Dreyer, M.; Kolz, J.; Speicher, A. *J. Am. Chem. Soc.* **2004**, *126*, 9283.

[4] Meidlinger, D.; Marx, L.; Bordeianu, C.; Choppin, S.; Colobert, F.; Speicher, A. *Angew. Chem. Int. Ed.* **2018**, *57*, 9160.

[5] Schmitz, P.; Malter, M.; Lorscheider, G.; Schreiner, C.; Carboni, A.; Choppin, S.; Colobert, F.; Speicher, A. *Tetrahedron* **2016**, *72*, 5230.